



XPATWEB

Work Permit & Expatriate Solutions

BESPOKE IMMIGRATION & EXPATRIATE SERVICES FOR CORPORATES & PROFESSIONALS ACROSS THE AFRICAN CONTINENT



BUSINESS VISAS



IMMIGRATION TRACKING SYSTEM



SHORT-TERM WORK PERMITS



EXPATRIATE & INTERNATIONAL TAX



LONG-TERM WORK PERMITS



INTERNATIONAL PAYROLL



RESIDENCE PERMITS



COMPANY REGISTRATION



PERMANENT RESIDENCE / CITIZENSHIP



IMMIGRATION AUDIT SERVICES



100%

WORK VISA SUCCESS RATE
WITH EXPEDITED DELIVERY



IMMIGRATION & WORK VISA SERVICES

We are considered the largest independent immigration practice in South Africa, being in existence for 14 years with 3 partners and over 100 employees. Our firm provides a holistic solution to South African and large international employers and one of our key strengths is that our team includes market leading immigration specialists, tax advisors, attorneys, chartered accountants, remuneration and payroll specialists, and certified financial planning; which allows us to provide complete expatriate and international mobility solutions.



OUR CLIENTS

Our clients include some of the largest expatriate employers in South Africa. We are also the preferred provider for many expatriate teams on energy and construction projects, mining and technology companies including some of South Africa's most prominent law firms that outsource their client work to us.



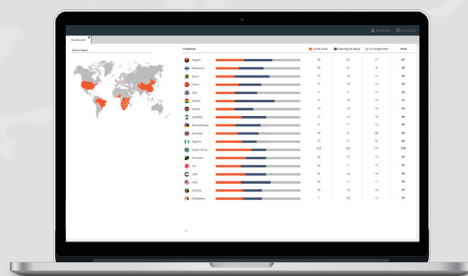
SOLUTION DRIVEN

We offer an all-inclusive service, from identifying the category of visa best suited, through to the compiling of a fully compliant application for submission taking care of all administration. We provide an end-to-end solution whereby we do not overly burden the client with administration. We do not merely send a list of requirements and place the administration and responsibility on the client and expatriate. Coupled with our service delivery orientated approach, we provide a seamless expatriate solution. To summate, we better appreciate than most the business importance and personal impact of obtaining a legal and correctly categorised visa in the most administrative efficient and timely manner. To summate, we better appreciate than most the business importance and personal impact of obtaining a legal and correctly categorised visa in the most administrative efficient and timely manner.



IMMIGRATION TRACKING SYSTEM

Our unique immigration tracking system has been designed to manage and track assignees across the globe. This system is characterised by its versatility and the below key features:



- Flexible to client needs
- Central platform to monitor the visa process end-to-end
- Provide a fully customisable reporting and dashboard function
- Tracking of assignees across geographical areas
- Document library to securely store all assignee documents



HOLISTIC APPROACH

We are the only service provider with an integrated solution including:

- International Payroll Outsourcing
- Foreign Exchange Service
- Proactive Non-Residency Status Confirmation
- Opening Local and Foreign Bank Accounts
- South African Reserve Bank Clearances
- Tax Planning, Compliance and Communication
- Build Up of Assignment Cost Calculator
- Expatriate Policy Design
- International Employee Agreements

AFRICA DESK

A WORK VISA SERVICE PROVIDER DEDICATED TO THE UNIQUE IMMIGRATION SPACE OF AFRICAN JURISDICTIONS

Offering holistic expatriation solutions tailored for migration into Africa

OUR SERVICES IN AFRICA SPAN ACROSS VARIOUS CATEGORIES TO INCLUDE THE FOLLOWING:



BUSINESS VISAS

We offer a streamlined approach to monitoring business travellers for corporate clients inclusive of the number of visits into various jurisdictions throughout Africa.

Through such, we ensure that the appropriate visa is obtained prior to travel where business activities are expected to be conducted and provide recommendations towards obtaining the correct work permit where travel to a given jurisdiction has become frequent, and, as a result, may be flagged by local authorities.



SHORT-TERM WORK ASSIGNMENTS

The definition of work in the immigration regulations in African jurisdictions is not so clearly defined. As such, if any form of activity is expected to be conducted beyond that of attending business meetings, conferences, or seminars/workshops, or any form of hands-on work for periods less than a year, a short-term work permit is recommended prior to travel. The validity period of short-term work permits depending on the jurisdiction can range from 90 days to 6 months, and, in some instances, even a year.

Our specialised immigration team can provide clarification through consultation, as, and when, business travellers are uncertain if their activities would exceed that which is allowable under a business visa in the respective African jurisdiction.



LONG-TERM WORK ASSIGNMENTS

Through our partnerships with a well-established network of providers, we provide a full service ensuring that all requirements specific to each permit type and jurisdiction are met according to the highest standard for a positive outcome.

In addition, our providers assist in securing meetings with appointed ministers, directors, or officials in the immigration or labour departments, whichever applicable, to ensure applications are progressing in an appropriate fashion without compromising integrity with the authorities, and to address any unique or complex matters.



OTHER SERVICES IN SOUTH AFRICA:



**CORPORATE
VISAS**



**CRITICAL SKILLS
WORK VISAS**



**PERMANENT
RESIDENCE PERMITS**



**GENERAL
WORK VISAS**



**INTRA-COMPANY
TRANSFER WORK VISAS**



**SHORT TERM WORK
VISAS (UP TO 6 MONTHS)**

CONTACT US

Telephone

South Africa: +27 11 467 0810
International: +27 11 782 5289

Email

africadesk@xpatweb.com
contact@xpatweb.com

Website

www.xpatweb.com

Address

Johannesburg
Wrigley Field Building
The Campus Business Park
57 Sloane Street
Bryanston
2021



XPATWEB

Work Permit & Expatriate Solutions